

**DO NOT SCALE.
IF IN DOUBT ASK.**

SPECIFICATION - INTERLINK HIRE

Building Span: 3 No. 9.6m Bays
Floor Loading: 3.0kN/m²
Roof Pitch: MONO FITCR1

Roof Construction:
Hyposal Type roof Membrane

Roof Trims:
Datum End: F Section High End Fascia Trim (Only)
Non-Datum End: F (a) Section Low End Fascia Cover
Trim # 5 Section Low End Eaves Trim.

Floor Construction:
12mm flooring grade plywood over floor joists.

Rainwater Goods:
External squareline gutter system - Colour: BLACK

External Wall Construction:
90x50 Galvanised steel stud wall panel sections interlocked to suit Building Span
Externally clad with 12.5mm MR Plasterboard bonded with Plastool
Internally lined with 12.5mm Vinyl Faced Plasterboard Colour: White

Exterior Finish:
Main body Colour: Goosewing Grey (BS 10 A 05)

External Trim:
Fascia Trim - Colour: Goosewing Grey (BS 10 A 05)
Column Trim - Colour: Goosewing Grey (BS 10 A 05)

Windows: - See Window Spec for details
Windows to be as standard PVC-U, 900 x 1200 inward opening
PVC-U White internal Window Liners

External Doors:
Main Entrance Door
Ply flush 1060/762x1981mm c/w 2xGG vision panel in GWPP Satinwood Painted - Colour: Goosewing Grey (BS 10 A 05)
Softwood Timber Frame Satinwood Painted - Colour:Merlin Grey (BS1 B B 25)
c/w Push / Pull Plates, Rollerball Latch And Euro Cylinder With Escutcheon Plates, Kick Plates And Door Self Closer.
(Drags: IB-4000-03 # IB-4000-015)

Fire Exit Door:
Ply flush 1060x1981mm c/w 2xG vision panel in GWPP Satinwood Painted - Colour: Goosewing Grey (BS 10 A 05)
Softwood Timber Frame Satinwood Painted - Colour:Merlin Grey (BS1 B B 25)
c/w Panic Bar, Kick Plate and Door Self Closer.
(Drags: IB-4000-02 # IB-4000-011)

Flush/Disabled Thresholds (Stormguard Trimline RIO Mobility Thresholds). See Drg IB-4000-15.
Galvanised Flush Door Cils See Drg IB-4000-16.
Finger Guards To All Doors

Skirting:
Black 100mm pvc cove skirting to all areas.
Skirting Fitted 300mm From Bay Joints To Allow A 600mm Infill Piece To Be Fitted On Site.

Ceiling Finish:
All Area(s) lined with 15mm Megadecco - Colour: Wilkham White
Two Part ceiling Jointing Trim (Plasterboard) - Colour: White
Two Part Plastic Coving (Plasterboard) - Colour: White
Coving Fitted 300mm From Bay Joints To Allow A 600mm Infill Piece To Be Fitted On Site.
"J" Section (Plasterboard) Bay to Bay Joint Trim - Colour: White

Internal Doors:
Beech Pre-Finished Solidcore
SW Timber Door frames satinwood Painted - Colour: White
SW Timber Architraves satinwood Painted - Colour: White.

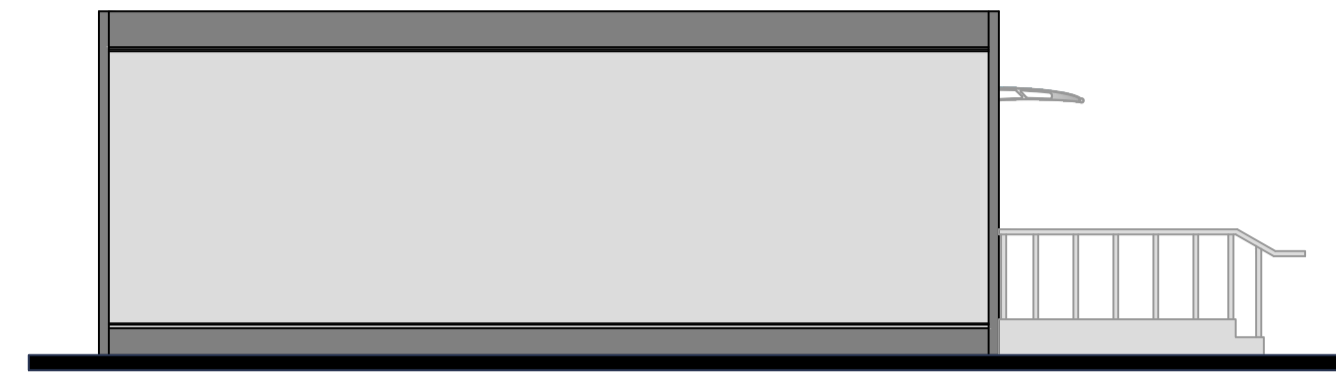
Canopy (Optional):
2700 Stainless Steel Lightline Canopy
Size: 2700mm x 950mm

Colour: White or Stainless Steel frames in a choice of four contemporary colours, Clear, Frosted White, Frosted Blue or Frosted Green.

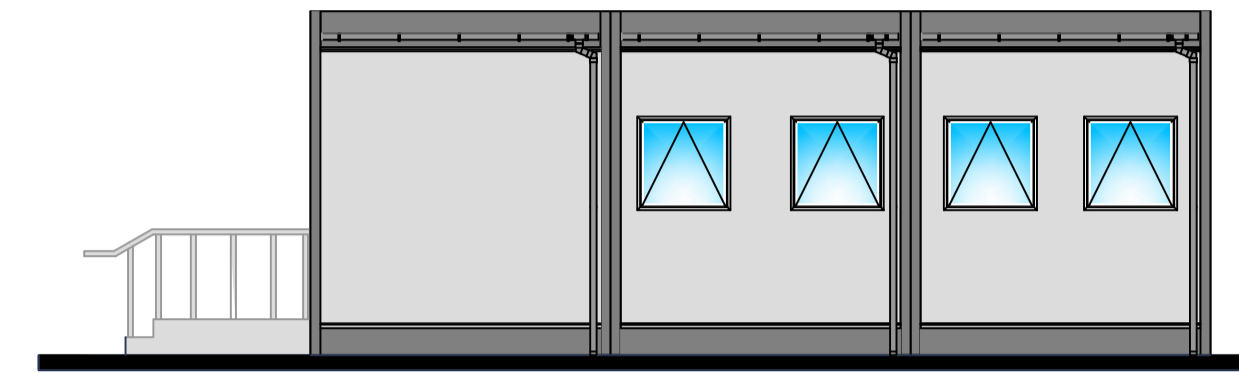
W1



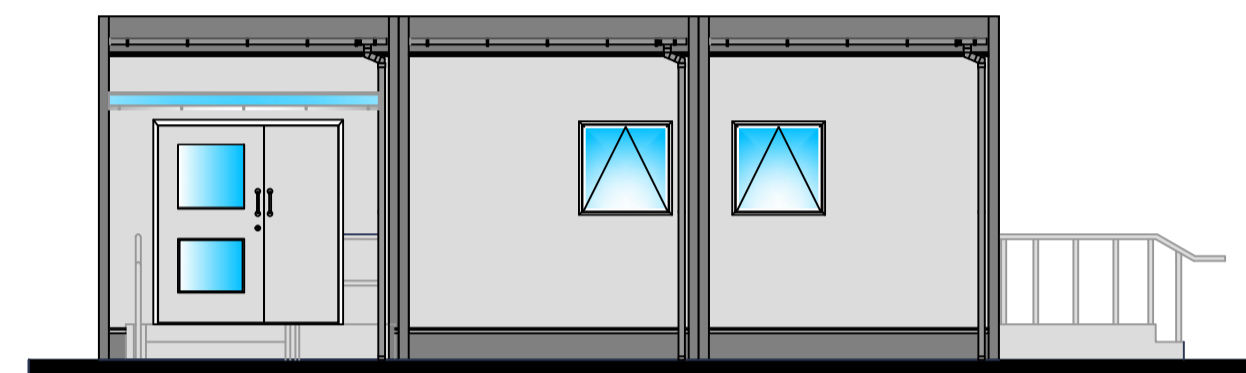
WHITE PVC-U DOUBLE GLAZED
28mm SEALED UNIT
FULLY OPERABLE TILT & TURN 64mm
COCKSPUR HANDLES AND TRICKLE VENT
SIZE: 900 x 1200



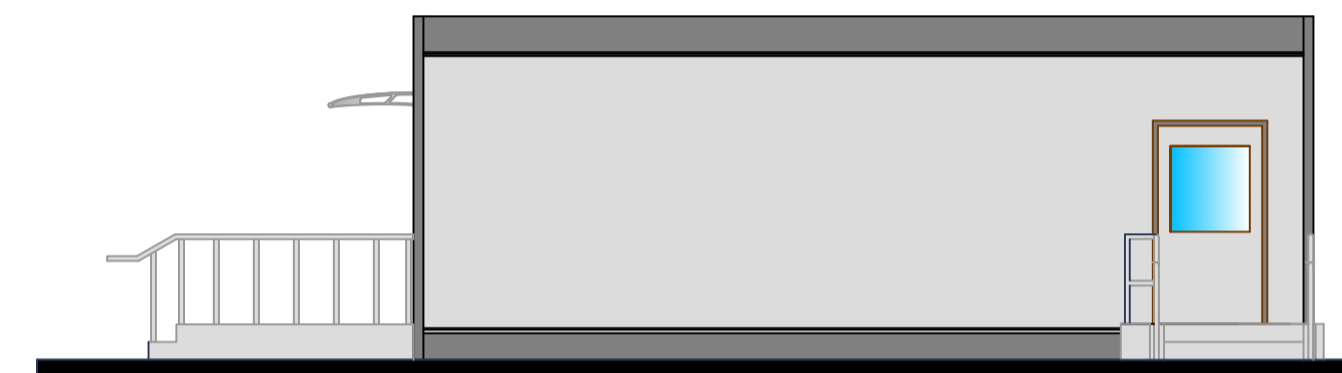
ELEVATION B



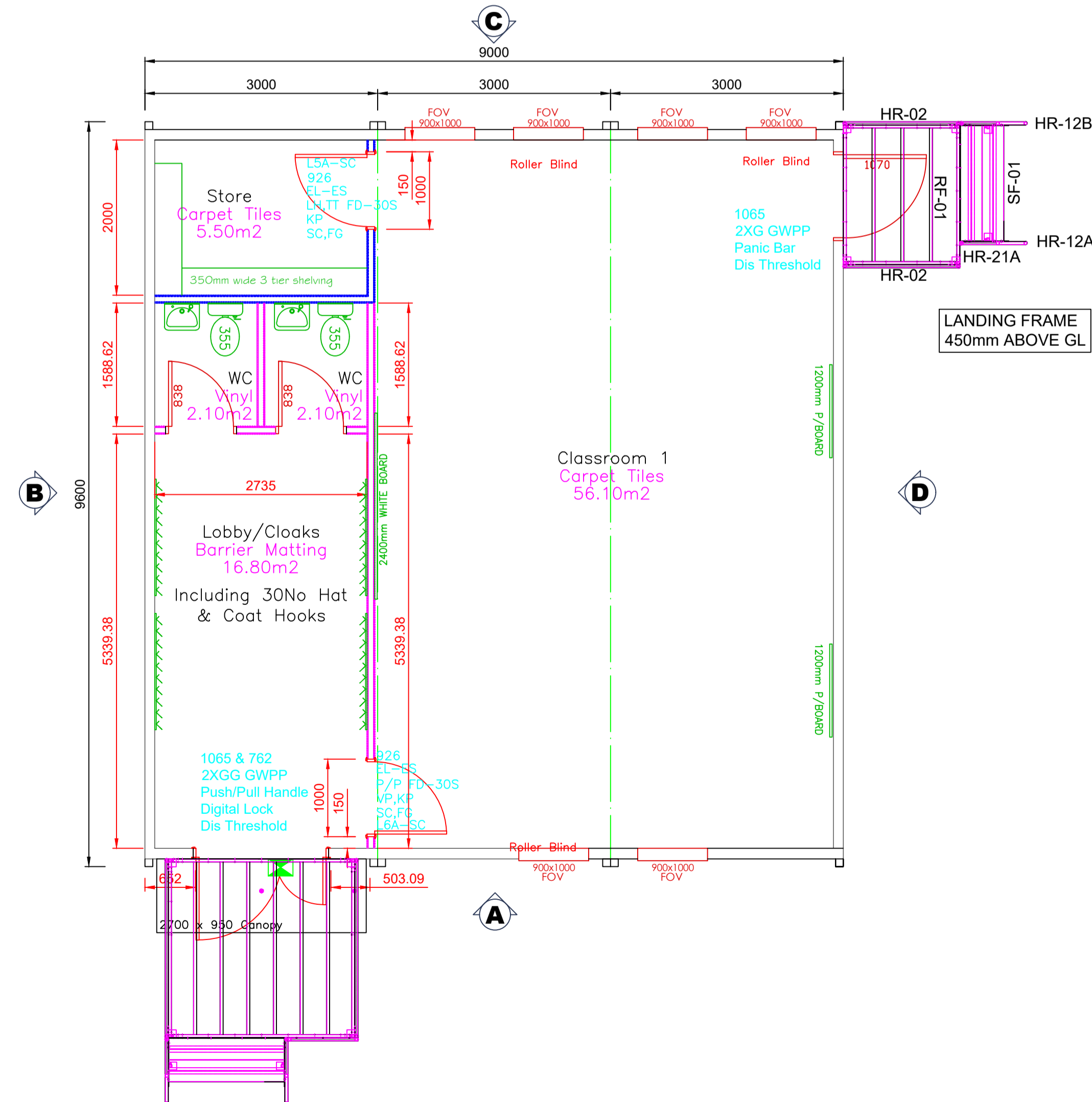
ELEVATION C



ELEVATION A



ELEVATION D



NOTES:
Window positions indicative, dependant on module availability at time of order. Furniture for illustration only.

This building complies with the following BS/BB codes:
BS 8300:2009
BB 100
BB 93
BB 101

01	DH	Bay Type Changed	15/06/15
00	MAG	First Issue	31/01/12
Rev	By	Description	Date



HEAD OFFICE
CATFOSS LANE, BRANDESBURTON, DRIFFIELD
EAST YORKSHIRE YO25 8EJ
Telephone: (01964) 545000 Fax: (01964) 545001
email: sales@waco.co.uk internet: www.waco.co.uk

THIS DRAWING AND DESIGN IS THE SOLE PROPERTY OF WACO UK AND MUST NOT BE COPIED, LOANED OR COMMUNICATED, IN WHOLE OR PART TO ANY THIRD PARTY WITHOUT CONSENT FROM THE COMPANY.

Client	WAS Lightwoods Primary School
Project	Standard Classroom Range Was St. Huberts RC Primary School
Title	Single Classroom With WC's & Store

Scale (at A1)	Drawn	Date:	Checked
1: 50	DH	21/04/15	
Drawing No.	Availability 523		Rev
			01